

## Walker Bags



### Walker Bags

Walker bags are used by those whose balance requires a walker for safety, but need extra carrying room for their knitting, books, etc.

This clever bag ties onto the bar of the walker, or can be adapted for use anywhere you need additional pockets to carry things as you move around.

Knit the bag in any gauge. Small amounts of yarn are needed. Great for using up leftovers.

**NOTE:** The bag is one size - when building the pattern with your gauge, you do not need to select a size.

**Sue Jalowiec**

Creation date: Monday, 8/22/2011

Knit it Now's patterns are copyrighted material and the entire contents of this service are copyrighted as a collective work under the copyright laws of the United States.

You may print this pattern from your own personal use or enjoyment, but may not edit, publish, transmit, e-mail, post to a list service or database, or otherwise commercially exploit this pattern. This pattern is for individual use only.

Knit It Now LLC © 2011

**Ease:** no value

**Size:** One Size One Size

**Designer:** Victoria Zeits

**Skill Level:**      
Easy

**Pocket** 1" gauge 6.25 stitches / 9 rows

Outside pocket for easy access.

**Bag Body** 1" gauge 6.25 stitches / 9 rows

Body of the bag is knit in one piece with pocket attached as you knit

**Finishing Instructions** 1" gauge 6.25 stitches / 9 rows

### Materials Required

Original Pattern was knitted in 2 gauges:

**Bulky Gauge** Red Heart Soft - 100% Acrylic - Worsted Weight - 4 ounces used

Lion Brand Hometown Spun (weaving yarn) - Acrylic/Poly - 2 ounces used

### Standard Gauge

Tamm Diamante Acrylic/Nylon - 2133 YPP 4 ounces used

Red Heart Worsted Supersaver Multi - 100% Acrylic - 2 ounces used

**Pocket**

**NOTE:** Bag is designed for stitch patterns with the purl side as the public (right) side. As written, the pocket is attached to the body of the bag as it faces you. If the public side of your bag is away from you as you are knitting, the pocket will be on the inside of the bag

With main color, cast on using a [Chain \(Crochet\) Cast On](#)

**Cast On**

RC: 0 Cast on 50 stitches. 50  
Set tension to main tension minus 2.

**Knit In Pattern**

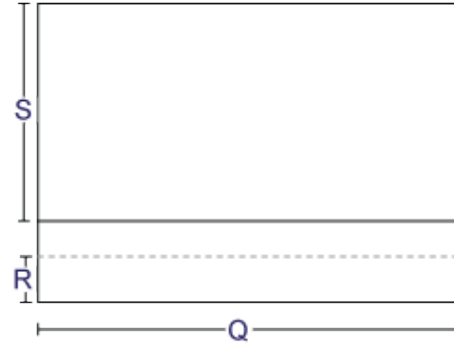
RC: 1 Knit even over 50 stitches to row 10 50  
The pocket opening is finished with a [Hung Hem](#)  
Knit 1 row at tension 10 for turning row.  
Return to main tension minus 2.

**Knit In Pattern**

RC: 10 Knit even over 50 stitches to row 19 50  
Hang the hem by picking up the cast on row.  
With Main Color, knit 1 row, (memorizing stitch pattern if applicable)  
Set carriage for weaving (either add or flip down weaving brushes).  
Using contrasting color for weaving, knit straight.

**Knit In Pattern**

RC: 19 Knit even over 50 stitches to row 59 50  
Remove weaving yarn, knit 1 row in main color.  
Knit 1 row ravel cord.  
Remove pocket on waste yarn.



**Pocket**

Stitch gauge: 6.25  
Row gauge: 9

Label	Inches	Rows	Stitch Count
<b>Q</b> Cast On	8.0		50
<b>R</b> Knit Straight	1.00	9	50
Knit Straight	1.00	9	50
<b>S</b> Knit Straight	4.50	40	50

Yarn Usage: Pocket is approx. 48 Square Inches

Maximum Height: 6.00 inches

Maximum Width: 8.00 inches

**Sue Jalowiec**  
For Personal Use only

Knit It Now Ilc - All Rights Reserved - © 2011

**Bag Body**

With main color, cast on using a [Chain \(Crochet\) Cast On](#)

**Cast On**

RC: 0 Cast on 88 stitches. 88  
At main tension minus 2, knit straight.

**Knit In Pattern**

RC: 1 Knit even over 88 stitches to row 10 88  
The bag opening is finished with a [Hung Hem](#)  
Knit 1 row at tension 10 for turning row.  
Return to main tension minus 2.

**Knit In Pattern**

RC: 10 Knit even over 88 stitches to row 19 88  
Hang the hem by picking up the cast on row.  
With Main Color, knit 1 row, (memorizing the stitch pattern if applicable).  
Set carriage for weaving (either add or flip down weaving brushes).  
Using contrasting color for weaving, knit straight.

**Knit In Pattern**

RC: 19 Knit even over 88 stitches to row 100 88  
Remove weaving yarn, knit 1 row in main color.  
Knit 1 row at Tension 10 for bottom of the band.  
Place Marker at each edge for bottom of the bag.  
Return to main tension

**Knit In Pattern**

RC: 100 Knit even over 88 stitches to row 109 88  
Pocket Attachment:  
With the private (wrong) side facing, Re-hang pocket on center needles. (hang from ravel cord)  
Take care to maintain needle selection when hanging the stitches.

**Knit In Pattern**

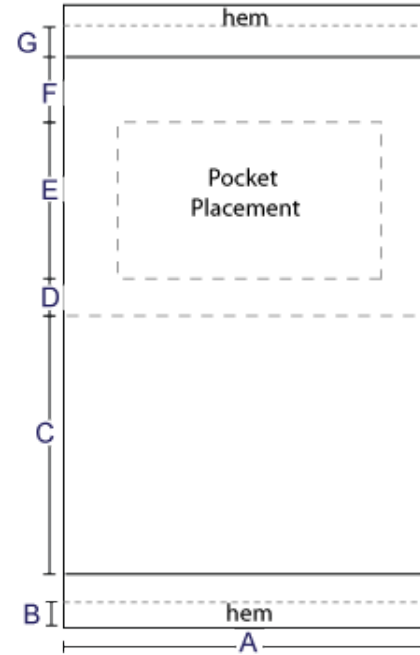
RC: 109 Knit even over 88 stitches to row 158 88  
Hang the Pocket edge stitch from the first row of weaving onto corresponding needles. (For example, if your pocket is 50 stitches, hang the first stitch on right 25 and left 25)

**Knit In Pattern**

RC: 158 Knit even over 88 stitches to row 180 88  
Stop patterning. End by knitting 1 row plain.  
Knit a [Marker Row](#) or knit 1 row of ravel cord. (Do not remove work from the machine)  
Set tension to Main Tension minus 2.

**Knit In Pattern**

RC: 180 Knit even over 88 stitches to row 189 88  
Knit 1 row at Tension 10  
Re-set tension to Main Tension minus 2



**Bag Body**

Stitch gauge: 6.25  
Row gauge: 9

Label	Inches	Rows	Stitch Count
<b>A</b> Cast On	14.0		88
<b>B</b> Knit Straight	1.00	9	88
Knit Straight	1.00	9	88
<b>C</b> Knit Straight	9.00	81	88
<b>D</b> Knit Straight	1.00	9	88
<b>E</b> Knit Straight	5.50	49	88
<b>F</b> Knit Straight	2.50	22	88
<b>G</b> Knit Straight	1.00	9	88
Knit Straight	1.00	9	88
Bind Off			88

Yarn Usage: Bag Body is approx. 140 Squa Inches

Maximum Height: 10.00 inches  
Maximum Width: 14.00 inches

---

**Knit In Pattern**

RC: 189 Knit even over 88 stitches to row 198 88

---

*Hang the final hem by picking up the first row of plain knitting after the last weaving row.*

*Either pick up the marker row or re-hang the ravel cord row using the bottom loop of the ravel cord marker row.*

*Knit 1 row and crochet cast off. [Reverse Hung Hem](#)*

---

**Bind Off**

RC: 198 Bind off 88 Stitches. 88

---

## Finishing Instructions

---

### I-cord ties:

#### [I-Cord on the Machine](#)

- With the wrong side (private side) of the work facing you, hold the hem against the machine. Starting at the 4th or 5th stitch in from the top hem edge, pick up 3-4 stitches. Make sure to pick up 2 strands for strength as you hang the stitches.
- Carriage on the right. Using MC **\*\*double stranded\*\***, Knit 1 row at main tension.
- Set cam to knit in 1 direction and knit to Row 180 (or desired length)
- Remove knitting with double eye needle and pull hard, then sew in yarn end into tie.
- Repeat 3 more times.

### Finishing:

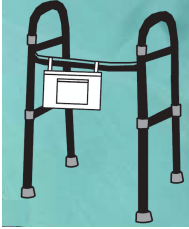
- Neatly stitch pocket edges
- Sew side seams securely
- Lightly block if desired

**Sue Jalowiec**  
**For Personal Use only**

Knit It Now llc - All Rights Reserved - © 2011

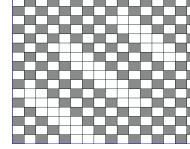
## Supporting file for Walker Bags

### Walker Bag Drawing



[\(click here to view full size image\)](#)

### Diagonal Knit Weave Chart



[\(click here to view full size image\)](#)

### Diagonal Weave DAK file

[Click here to download this file \(stp format\)](#)

**Sue Jalowiec**  
For Personal Use only

Knit It Now llc - All Rights Reserved - © 2011